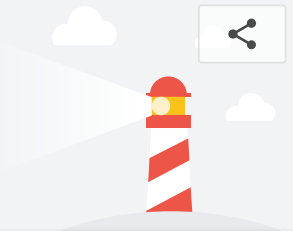


<https://speed.crlab.com.tw/>

Nov 19, 2018, 4:34 PM GMT+8

Emulated Nexus 5X, Unknown



Performance



Best Practices



Accessibility



SEO

Score scale: ● 90-100 ● 50-89 ● 0-49

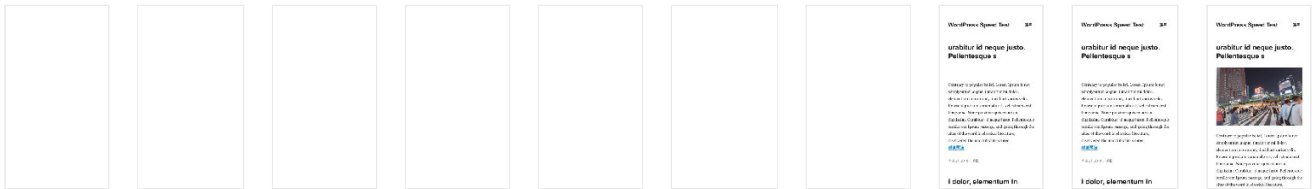
## Performance

### Metrics



First Contentful Paint	1.9 s <span style="color: green;">✔</span>	First Meaningful Paint	2.0 s <span style="color: green;">✔</span>
Speed Index	5.6 s <span style="color: orange;">i</span>	First CPU Idle	6.9 s <span style="color: red;">▲</span>
Time to Interactive	26.1 s <span style="color: red;">▲</span>	Estimated Input Latency	310 ms <span style="color: red;">▲</span>

Values are estimated and may vary.



### Opportunities

These optimizations can speed up your page load.

Opportunity	Estimated Savings
1 Enable text compression	11.67 s <span style="color: red;">▼</span>
2 Defer offscreen images	4.35 s <span style="color: red;">▼</span>
3 Serve images in next-gen formats	1.5 s <span style="color: red;">▼</span>
4 Defer unused CSS	0.9 s <span style="color: red;">▼</span>
5 Reduce server response times (TTFB)	0.18 s <span style="color: red;">▼</span>
6 Efficiently encode images	0.15 s <span style="color: orange;">▼</span>

### Diagnostics

More information about the performance of your application.

1 Ensure text remains visible during webfont load	<span style="color: red;">▲</span> <span style="color: gray;">▼</span>
2 Minimize main-thread work	7.8 s <span style="color: red;">▲</span> <span style="color: gray;">▼</span>
3 Serve static assets with an efficient cache policy	18 resources found <span style="color: red;">▲</span> <span style="color: gray;">▼</span>

4	Reduce JavaScript execution time	4.1 s	▲	▼
5	Avoid enormous network payloads	Total size was 4,108 KB	▲	▼
6	Avoid an excessive DOM size	1,061 nodes	ⓘ	▼
7	Minimize Critical Requests Depth	2 chains found		▼
✓	<b>Passed audits</b>			9 audits ▼

## Best Practices



1	Does not use HTTP/2 for all of its resources	16 requests not served via HTTP/2	▲	▼
2	Uses <code>document.write()</code>		▲	▼
3	Includes front-end JavaScript libraries with known security vulnerabilities	1 vulnerability detected	▲	▼
4	Browser errors were logged to the console		▲	▼
✓	<b>Passed audits</b>			11 audits ▼

## Accessibility



These checks highlight opportunities to [improve the accessibility of your web app](#). Only a subset of accessibility issues can be automatically detected so manual testing is also encouraged.

### ARIA Attributes Follow Best Practices

These are opportunities to improve the usage of ARIA in your application which may enhance the experience for users of assistive technology, like a screen reader.

1	[aria-*] attributes do not have valid values		▲	▼
---	--	--	---	---

### Elements Describe Contents Well

These are opportunities to make your content easier to understand for a user of assistive technology, like a screen reader.

2	<frame> or <iframe> elements do not have a title		▲	▼
---	--	--	---	---

🔍	<b>Additional items to manually check</b>	11 audits	▼
✓	<b>Passed audits</b>	19 audits	▼
⊖	<b>Not applicable</b>	14 audits	▼

## SEO



These checks ensure that your page is optimized for search engine results ranking. There are additional factors Lighthouse does not check that may affect your search ranking. [Learn more](#).

### Content Best Practices

Format your HTML in a way that enables crawlers to better understand your app's content.

1	Document does not have a meta description		▲	▼
---	---	--	---	---

🔍	<b>Additional items to manually check</b>	2 audits	▼
---	---	----------	---

✓ **Passed audits**

9 audits ▾

⊖ **Not applicable**

1 audits ▾

### Runtime settings

- **URL:** `https://speed.crlab.com.tw/`
- **Fetch time:** Nov 19, 2018, 4:34 PM GMT+8
- **Device:** Emulated Nexus 5X
- **Network throttling:** Unknown
- **CPU throttling:** Unknown
- **User agent (host):** Mozilla/5.0 (X11; Linux x86\_64) AppleWebKit/537.36 (KHTML, like Gecko) HeadlessChrome/72.0.3603.0 Safari/537.36
- **User agent (network):** Mozilla/5.0 (Linux; Android 6.0.1; Nexus 5 Build/MRA58N) AppleWebKit/537.36 (KHTML, like Gecko) Chrome/71.0.3559.0 Mobile Safari/537.36
- **CPU/Memory Power:** 646

---

Generated by **Lighthouse** 4.0.0-alpha.0 | [File an issue](#)